

NEWSLETTER

June 2011



CONTENT

| | |
|---------------------------------|------|
| Competitions at the 6.PPM | p. 2 |
| Mirka Kalinová | p. 3 |
| Mystery Quilt by Kimberly Einmo | p. 4 |
| Equivalency table | p. 6 |

New Mystery Quilt project is here

Dear quilters,

As already promised to you in the last issue of the Newsletter, we are starting the new Mystery quilt project by Kimberly Einmo now! The quilt Kimberly prepared for you is again stunning and we hope you will enjoy making it as much as the last year.

Further on, we will bring you a detail overview of all competitions taking place during the 6th Prague Patchwork Meeting next year. Feel free to join them! Mirka Kalinová, the winner of this years' competition "Networks" will share with you how the winning quilt was made.

Have a great summer!

Anna Štěrbová

The best for patchwork...

We bring you links to all the pages you may find useful when quilting!

www.sicistroj.cz

www.ragos.cz

www.strima.com

www.bernina.cz www.bernina.sk

www.patchwork-hobby.cz

www.patch-design.cz

www.aja-patchwork.cz

www.hotelstep.cz

„I listed through my sketchbook and when I found the beautiful piece of red taffeta, I knew the sun will be red.“

Mirka Kalinová, p.3



5th Prague Patchwork Meeting
Photo: Petr Nikodem

More Pictures from the 5th PPM may be found on our webpage in the Gallery Section.

Conditions of competitions during the 6th Prague Patchwork Meeting 2012

Many of you ask us about the competitions we have prepared for you for the upcoming year, the details, conditions etc. So that you can start sewing as soon as possible, we bring you the information straight away.

Major international competition on the topic SLOT – any style

Each side should be 80 – 150 cm tolerating 10% including any outstanding parts, the major evaluation criteria is the elaboration of the topic. The works should be a quilted, more layer textile piece. Should the quilt not comply with the topic, it will be displayed within a different section. The evaluation will be made by international jury.

Classical quilts competition – LOG CABIN

Each side should be 50 – 200 cm tolerating 10%, classic quilts, which must content any variant of the log cabin pattern. The evaluation will be made by international jury.

Art Quilt Club CZ collection: compulsory material is WOOL

Each side should be 80-100 cm tolerating 5%, the works should be a quilted, more layer textile piece with an individual idea. Wool has to be present by at least 25% of the surface.

Mystery Quilt by Kimberly Einmo

Quilt size is given by the instructions provided within the PPM Newsletter, thus ca 203x203 cm.

As usually, the visitors will be picking up the best Czech quilt of all the quilts paid for. Quilts reflecting the workshops of the PPM 2011 will be displayed for free if space allows.

Jana Štěrbová

Log cabin

classics

SLOT

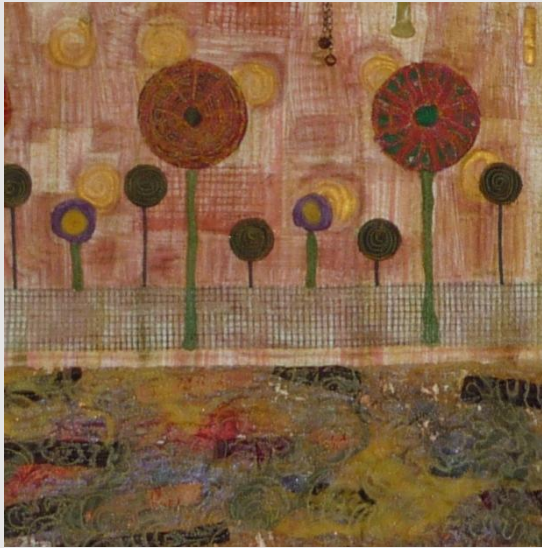
International competition

Art quilt
WOOL

Mystery

Quilt by Kimberly

Winning quilts of the 5th PPM: Sun in the Net (MIRKA KALINOVÁ)



Sun in the Net (detail)

**„...there was a curtain laying
on the shelf and I knew
immediately I had my net“**

Mirka Kalinová

When I started thinking about how to come around the topic "Networks", I came up with the idea quite soon (compared to many other quilts). I listed through my sketchbook and when I found a beautiful red piece of red taffeta, I knew straight away that the sun is going to be red.

I have pictured the warm colors and knew that I will hang the quilt at our cottage as it will match the red sofa. I used Evolon for background as it is so easy to paint on.

I have covered the whole surface with textile paints using both brushes and the mono-print technique. Then I printed the circles with help of a sponge and printed the grids, I printed the letters using a template, followed by applying the green parts. The "flowertrees" (as my friend Jindra calls them) were done in a way where I first cut out circles of the taffeta and then embodied the blossoms which I created with help of soluble. Small blossoms were made using the taffeta and woolen dreadlocks. In the lower part I used taffeta and wool, which I quilted over organza and burned. I used similar techniques for the next panel, using tyvek as well.

In the lower part I have used jute which I interwove with pieces of taffeta, covered with black tulle and quilted. I machine quilted the whole piece, but the sun was still not inside the net. I tried different materials, but did not really like anything and the deadline was approaching so quickly. So one day I went to the Mráz shop and there was a beautiful net curtain on the shelf. I knew immediately that it was my net. The shop assistant was surprised that I wanted just a piece of a curtain, but when I told her the story she promised to keep her fingers crossed for me to win.

And she probably did as I won. I am really happy about the victory and feel honored about it as well.

Mirka Kalinová

Sun in the Net (Slunce v síti),
Mirka Kalinová
Winner of the international
exhibition „Networks during
the 5th PPM!

The photo was provided by
the author.



Challenge for all quilters and fans of PPM

After the very successful completion of the Czech Star Mystery Quilt project, which we have brought you during 2010 (the finished quilts were displayed in April during the 5th PPM), we would like to invite you to participate on the new Mystery.

Exclusively for PPM, it was again designed by the American author Mrs. Kimberly Einmo. Why don't you share the joy and curiosity related to the quilting with us? Join us in making the "Czech Star Trail" and follow the steps every month in the PPM Newsletter.

The completed quilts will be once again displayed as a special collection during the 5th Prague Patchwork Meeting in the spring of 2012.

Step by step you will figure out about the materials, the cutting, sewing your future mystery quilt etc. We are sure you will fall in love with the secondary pattern, which will emerge once you connect the blocks. The project is suitable for beginners as well, you will not need any special tools.

Join us and follow the next Newsletters, which will reveal the secret.

Kimberly Einmo

HINTS AND TIPS

- Prepare a list of your fabrics and place a small piece next to the fabric number- It will make it easier for you to identify the fabric later on
- Wash and iron your fabrics in preparation for cutting. If possible, use spray sizing or synthetic starch to press your fabrics before you cut them according to the rotary cutting chart. The extra crispness makes wrinkles disappear and the fabric easier to cut. Your pieces will be more precise, and this will make your piecing more accurate.
- Follow the assembly steps in the order they are given. Don't jump ahead – you will be surprised where particular sets of patches end up in the blocks!

Fabrics you will need – the complete overview:

FABRIC 1 = 1,30 m (multi color, may be even with bigger pattern as it will be used for the outer border closing the quilt)

(should it be a problem to piece the border from 2 separate pieces due to pattern break, it is necessary to cut the borders from 2.2m long fabric along the salvage)

FABRIC 2 = 2,20 m (light with minimal pattern, small pattern, used for background)

FABRIC 3 = 40 cm (medium light)

FABRIC 4 = 75 cm (medium with patterns, repeats over the whole surface)

FABRIC 5 = 50 cm (medium dark)

FABRIC 6 = 15 cm (medium)

FABRIC 7 = 1,50 m (dark fabric, partially used for inner border)

The fabric requirement is provided for fabric width of 110 cm and needs to be adjusted for different fabric width!

The project is supported by the general distributor of PFAFF for the Czech Republic – Haišman company.

Mystery Quilt „Czech Star Trail“ – Step 1

Design by Kimberly Elnmo

Quilt size: 80" x 80" (203x203 cm) / completed block size: 9" x 9" (23 x 23 cm)

Fabric requirements and rotary cutting: *cut all stripes salvage to salvage*

| FABRIC | YARDAGE | CUTTING INSTRUCTIONS |
|--|---------------------------------------|--|
| Fabric #1 Multi-color Pattern of the main boarder | 1½ yd (1,30 m) or 2½ yd (2,20m) | <ul style="list-style-type: none"> • 2 stripes 2" wide; put aside for strip set • 8 stripes 5½" wide for pieced outer boarder (4 stripes 5 ½" wide for non pieced boarder) |
| Fabric #2 Light background | 2½ yd (2,20 m) | <ul style="list-style-type: none"> • 4 stripes 3½" wide; to be cut into 48 squares 3½" x 3½" (A pieces) • 2 stripes 4¼" wide; cut into 11 squares 4¼" x 4¼" , then cut 2 x diagonally, receiving 44 pieces (B pieces) • 6 stripes 2" wide ; put aside for four-patch blocks • 12 stripes 3½" wide; to be cut into 48 rectangles 3½" x 9½" (E pieces) |
| Fabric #3 Light medium | ½ yd (40 cm) | <ul style="list-style-type: none"> • 2 stripes 2" wide, put aside for strip set • 2 stripes 4¼" wide ; cut into 14 squares 4¼" x 4¼" , then each of them 2 x diagonally, receiving 56 pieces (B pieces)in total |
| Fabric #4 Medium | 7/8 yd (75 cm) | <ul style="list-style-type: none"> • 2 stripes 2" wide; put aside for strip set • 3 stripes 3½" wide; cut into 25 squares 3½" x 3½" (A pieces) • 6 stripes 2" wide; put aside for four-patch blocks |
| Fabric #5 Medium dark | 5/8 yd (50 cm) | <ul style="list-style-type: none"> • 2 stripes 2" wide ; put aside for strip set • 3 stripes 4¼" wide; to be cut into 25 squares 4¼" x 4¼" and each 2 x diagonally, receiving 100 pieces (B pieces) |
| Fabric #6 Medium | ¼ yd (15 cm) | <ul style="list-style-type: none"> • 2 stripes 2" wide; put aside for strip set |
| Fabric #7 Dark | 1 5/8 yd (1,5 m) | <ul style="list-style-type: none"> • 2 stripes 2" wide ; put aside for strip set • 5 stripes 3 7/8" wide ; cut into 50 squares 3 7/8" x 3 7/8" , which we cut 1 x diagonally, receiving 100 pieces (D pieces) • 8 stripes 3½" wide; put aside for inner boarder. Will need to be pieced together consequently. |
| Backing | --- | 2 pieces 44" x 88" |
| Batting | --- | 88" x 88" |
| Binding | ¾ yd. | • 9 stripes 2¼" wide, will need piecing together |

The biggest selection of fabrics for this project is brought to you by

WIS Patchwork Studio (<http://www.eshop.patchwork-studio.cz/>)

Mystery Quilt „Czech Star Trail“ – Step 1 (part 2)

Overview:

| PIECES | SIZE (Measures include seam allowance) |
|--------|---|
| A | 3½" x 3½" square |
| B | 4¼" x 4¼" square. Cut 2 x diagonally into 4 triangles |
| C | 2" x 2" square |
| D | 3 7/8" x 3 7/8" square. Cut 1 x diagonally into 2 triangles |
| E | 3½" x 9½" rectangle |

When working in centimeters, the measures have to be recalculated using the metric equivalency chart below!

Generally: 1 yd = 0,91 m, 1" = 2,54 cm

The usage is based on a standard fabric 110 cm wide. Should you wish to use fabrics with different width, you will have to adjust the usage accordingly!

METRIC EQUIVALENCY CHART

mm=millimeters

cm=centimeters

| YARDS | METERS | YARDS | METERS | YARDS | METERS | YARDS | METERS | YARDS | METERS |
|-------|--------|-------|--------|-------|--------|-------|--------|-------|--------|
| 1/8 | 0.11 | 2 1/8 | 1.94 | 4 1/8 | 3.77 | 6 1/8 | 5.60 | 8 1/8 | 7.43 |
| 1/4 | 0.23 | 2 1/4 | 2.06 | 4 1/4 | 3.89 | 6 1/4 | 5.72 | 8 1/4 | 7.54 |
| 3/8 | 0.34 | 2 3/8 | 2.17 | 4 3/8 | 4.00 | 6 3/8 | 5.83 | 8 3/8 | 7.66 |
| 1/2 | 0.46 | 2 1/2 | 2.29 | 4 1/2 | 4.11 | 6 1/2 | 5.94 | 8 1/2 | 7.77 |
| 5/8 | 0.57 | 2 5/8 | 2.40 | 4 5/8 | 4.23 | 6 5/8 | 6.06 | 8 5/8 | 7.89 |
| 3/4 | 0.69 | 2 3/4 | 2.51 | 4 3/4 | 4.34 | 6 3/4 | 6.17 | 8 3/4 | 8.00 |
| 7/8 | 0.80 | 2 7/8 | 2.63 | 4 7/8 | 4.46 | 6 7/8 | 6.29 | 8 7/8 | 8.12 |
| 1 | 0.91 | 3 | 2.74 | 5 | 4.57 | 7 | 6.40 | 9 | 8.23 |
| 1 1/8 | 1.03 | 3 1/8 | 2.86 | 5 1/8 | 4.69 | 7 1/8 | 6.52 | 9 1/8 | 8.34 |
| 1 1/4 | 1.14 | 3 1/4 | 2.97 | 5 1/4 | 4.80 | 7 1/4 | 6.63 | 9 1/4 | 8.46 |
| 1 3/8 | 1.26 | 3 3/8 | 3.09 | 5 3/8 | 4.91 | 7 3/8 | 6.74 | 9 3/8 | 8.57 |
| 1 1/2 | 1.37 | 3 1/2 | 3.20 | 5 1/2 | 5.03 | 7 1/2 | 6.86 | 9 1/2 | 8.69 |
| 1 5/8 | 1.49 | 3 5/8 | 3.31 | 5 5/8 | 5.14 | 7 5/8 | 6.97 | 9 5/8 | 8.80 |
| 1 3/4 | 1.60 | 3 3/4 | 3.43 | 5 3/4 | 5.26 | 7 3/4 | 7.09 | 9 3/4 | 8.92 |
| 1 7/8 | 1.71 | 3 7/8 | 3.54 | 5 7/8 | 5.37 | 7 7/8 | 7.20 | 9 7/8 | 9.03 |
| 2 | 1.83 | 4 | 3.66 | 6 | 5.49 | 8 | 7.32 | 10 | 9.14 |

| INCHES | MM | CM | INCHES | CM | INCHES | CM |
|--------|-----|------|--------|------|--------|-------|
| 1/8 | 3 | 0.3 | 9 | 22.9 | 30 | 76.2 |
| 1/4 | 6 | 0.6 | 10 | 25.4 | 31 | 78.7 |
| 3/8 | 10 | 1.0 | 11 | 27.9 | 32 | 81.3 |
| 1/2 | 13 | 1.3 | 12 | 30.5 | 33 | 83.8 |
| 5/8 | 16 | 1.6 | 13 | 33.0 | 34 | 86.4 |
| 3/4 | 19 | 1.9 | 14 | 35.6 | 35 | 88.9 |
| 7/8 | 22 | 2.2 | 15 | 38.1 | 36 | 91.4 |
| 1 | 25 | 2.5 | 16 | 40.6 | 37 | 94.0 |
| 1 1/4 | 32 | 3.2 | 17 | 43.2 | 38 | 96.5 |
| 1 1/2 | 38 | 3.8 | 18 | 45.7 | 39 | 99.1 |
| 1 3/4 | 44 | 4.4 | 19 | 48.3 | 40 | 101.6 |
| 2 | 51 | 5.1 | 20 | 50.8 | 41 | 104.1 |
| 2 1/2 | 64 | 6.4 | 21 | 53.3 | 42 | 106.7 |
| 3 | 76 | 7.6 | 22 | 55.9 | 43 | 109.2 |
| 3 1/2 | 89 | 8.9 | 23 | 58.4 | 44 | 111.8 |
| 4 | 102 | 10.2 | 24 | 61.0 | 45 | 114.3 |
| 4 1/2 | 114 | 11.4 | 25 | 63.5 | 46 | 116.8 |
| 5 | 127 | 12.7 | 26 | 66.0 | 47 | 119.4 |
| 6 | 152 | 15.2 | 27 | 68.6 | 48 | 121.9 |
| 7 | 178 | 17.8 | 28 | 71.1 | 49 | 124.5 |
| 8 | 203 | 20.3 | 29 | 73.7 | 50 | 127.0 |